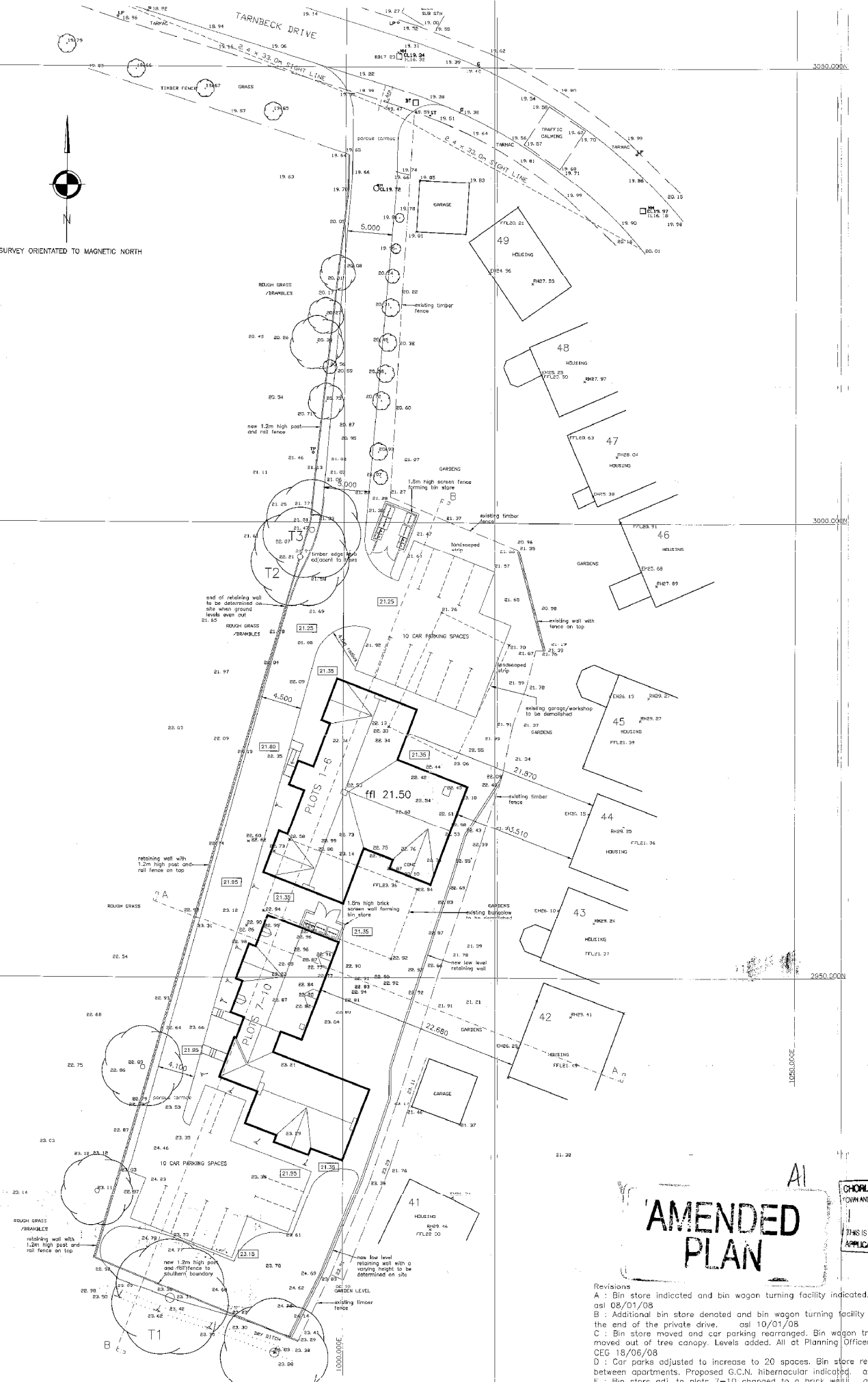


SURVEY ORIENTATED TO MAGNETIC NORTH



# AMENDED PLAN

CHORLEY BOROUGH COUNCIL  
TOWN AND COUNTRY PLANNING ACT 1990  
1 SEP 2008  
THIS IS THE PLAN REFERRED TO IN APPLICATION No. 08/123/FULL

- Revisions
- A : Bin store indicated and bin wagon turning facility indicated. asl 08/01/08
  - B : Additional bin store denoted and bin wagon turning facility indicated at the end of the private drive. asl 10/01/08
  - C : Bin store moved and car parking rearranged. Bin wagon tracking moved out of tree canopy. Levels added. All at Planning Officers request. CEG 18/06/08
  - D : Car parks adjusted to increase to 20 spaces. Bin store relocated between apartments. Proposed G.C.N. hibernaculum indicated. asl 20/08/08
  - E : Bin store adj. to plots 7-10 changed to a brick wall. asl 29/08/08

CLIENT <b>ANCER HOMES LTD</b>				
PROJECT <b>PROPOSED RESIDENTIAL DEVELOPMENT AT CROW NEST COTTAGE TARNBECK DRIVE MAWDESLEY</b>				
DRAWING TITLE <b>PROPOSED SITE LAYOUT</b>				
DATE <b>22/10/07</b>	SCALE <b>1:200 @A1</b>	DRAWN <b>CEG</b>	DRWG. NO. <b>07/170/P01</b>	REV <b>E</b>

**LMP**  
ARCHITECTURAL CONSULTANTS  
213 PRESTON ROAD  
MARRIOTT-LE-ROOSES  
CHORLEY  
LANCASHIRE  
PR6 7NS  
TEL: 01525 246555  
FAX: 01525 08224  
www.lmparch.co.uk

© Copyright Lawes Magorson Practice Ltd.